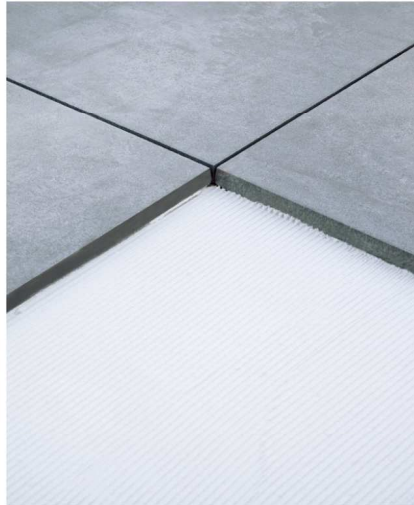


## Installation

At PrimaPorcelain, we're proud to sell the very best quality porcelain tiles and paving that are available on the international market. We're confident that once you have made your choice and we have delivered, you will be delighted with our products. That's why it is important that they are then installed impeccably to show them to full advantage to your friends and family.



Laying 1cm tiles with tile adhesive onto an existing concrete substrate (will require grouting)

## 1cm Tiles

Indoors, traditional adhesive techniques can be used to position the tiles to meet your design requirement.



Laying 1cm tiles with tile adhesive onto an existing concrete substrate (will require grouting)

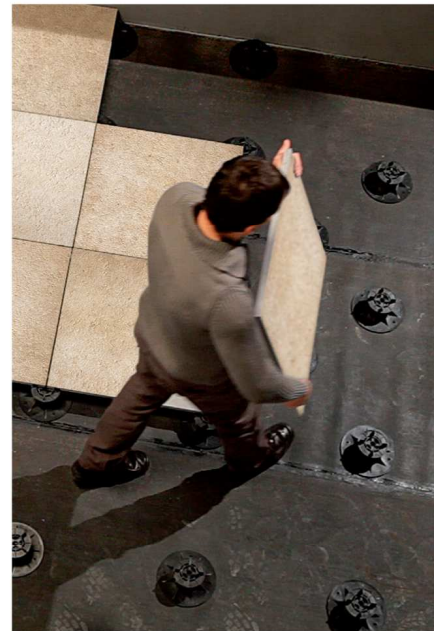
## 2cm Paving

### Dry installation method

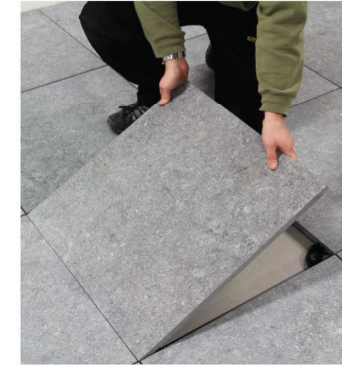
Outdoors we recommend our easy-to-use, fixed pedestal support dry installation system. Your paving sits side-by-side symmetrically without the requirement for mortar, adhesive or grouting.

The pedestals provide a pure, level surface quickly and easily, increasing acoustic insulation and allowing cabling and piping to be concealed.

Should dry installation not be suitable, you can use a traditional mortar cement combined with SBR bonding agent to lay your porcelain tiles or paving.



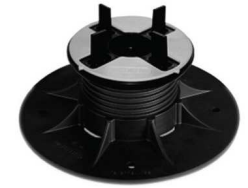
Laying 2cm paving with support pedestals (no grouting required)



Installation using pedestal supports (no grouting required)



Fixed support



Support pedestal

### Wet installation using SBR bonding agent

Should dry installation not be suitable, or to install onto a soil substrate, you can use a traditional mortar cement combined with SBR bonding agent to lay your porcelain tiles or paving.

