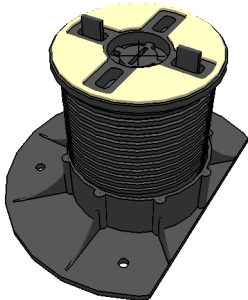
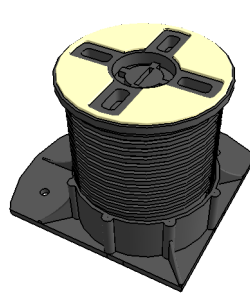


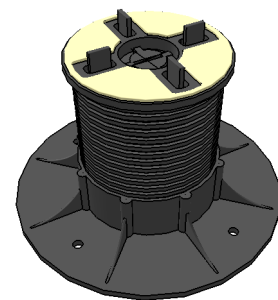
**PAVING LAYING PATTERN AROUND A BUILDING EXTERNAL CORNER.**



**Condition 01**  
(Along external edge)



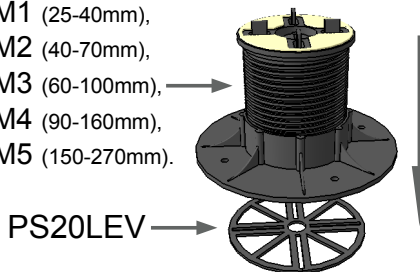
**Condition 02**  
(In external corner)



**Condition 03**  
(4 Tile junction)

**PAVING SUPPORT ILLUSTRATIVE CUTTING GUIDE.**

- NM1 (25-40mm),
- NM2 (40-70mm),
- NM3 (60-100mm),
- NM4 (90-160mm),
- NM5 (150-270mm).



**NM1-5 & PS20LEV STACKING.**

The NM pedestals can be used in conjunction with one PS20LEV Levelling disc. Do NOT stack the NM pedestals to achieve greater height. For lesser height build up the PS20 paving supports should be used.

**NOTES:**

- 2cm thick paving laid in chequerboard pattern to building external corner.
- Paving indicated translucent for clarity.
- An PS20LEV 3mm levelling disc can be inserted below the NM-- pedestals to adjust level differences between the supporting structure and the pedestal.
- Under no circumstances should the NM-- pedestals be stacked.
- Condition 01: NM-- pedestal, base cut straight with 2 tabs parallel to cut, removed.
- Condition 02: NM-- pedestal, base cut on two edges at right angles with all tabs removed.
- Condition 03: NM-- pedestal, no tabs removed. No cutting to paving support.
- In addition to the pedestals indicated, an additional NM-- pedestal can be installed at the centre of each paving slab for extra support.