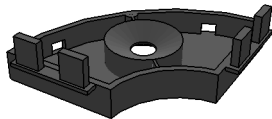
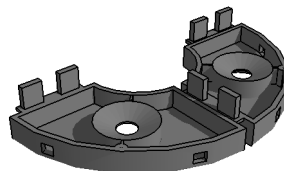


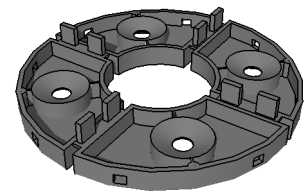
**PAVING LAYING PATTERN AROUND A EXPOSED EXTERNAL CORNER.**



**Condition 01**  
(Exposed external corner)

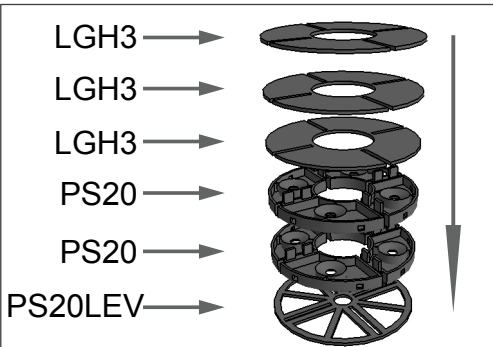


**Condition 02**  
(Exposed edge)



**Condition 03**  
(4 Tile junction)

**PAVING SUPPORT ILLUSTRATIVE CUTTING GUIDE.**



**PS20, PS20LEV & LGH3 STACKING.**

A maximum of two PS20 paving supports and three LGH3 3mm shims with one PS20LEV levelling disc can be stacked (Total 36mm build up). For greater height build up the NM1-5 paving pedestals should be used.

**NOTES:**

- 2cm thick paving laid in chequerboard pattern to building external corner.
- Paving indicated translucent for clarity.
- LGH3 3mm shim can be inserted on paving supports (maximum 3 per support).
- An PS20LEV 3mm levelling disc can be inserted below the paving support to adjust level differences between the supporting structure and the paving support.
- A maximum of two PS20 paving supports can be stacked to overcome larger level differences.
- Condition 01: PS20 Paving support cut in 1/4 with four tabs remaining.
- Condition 02: PS20 Paving support cut in half with six tabs retained.
- Condition 03: PS20 Paving support, no tabs removed. No cutting to paving support.
- In addition to the paving supports indicated, an additional PS20 paving support can be installed at the centre of each Paving slab for extra support.